

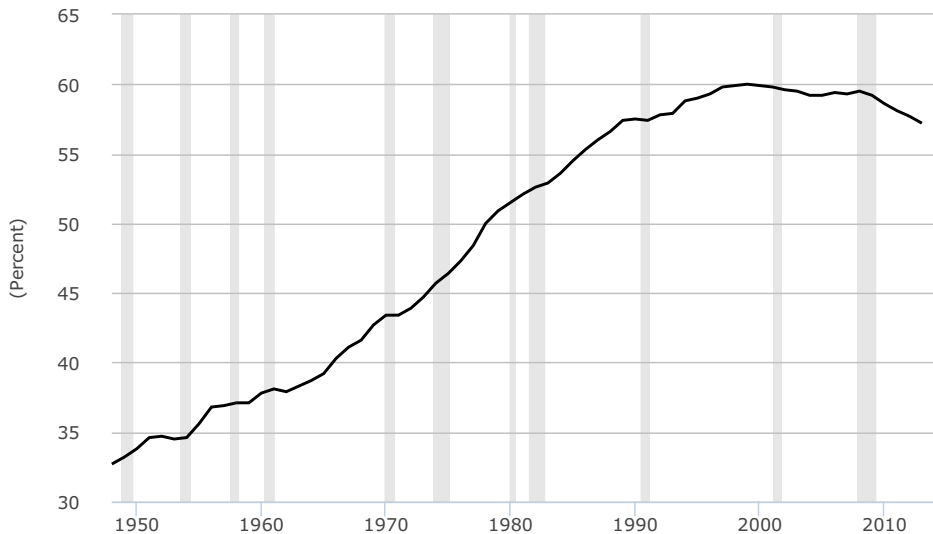
FEMALE LABOR FORCE PARTICIPATION: SLACK AND REFORM

Jennifer Hunt

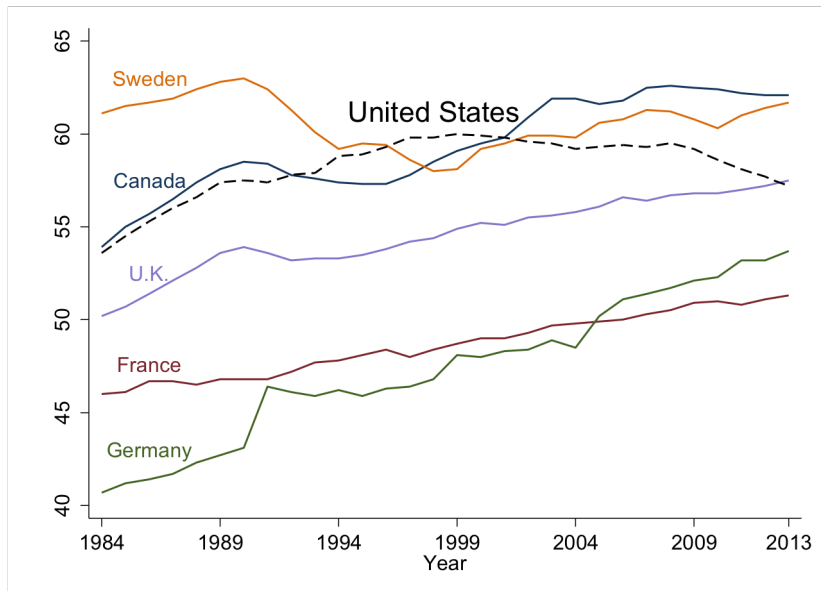
Deputy Assistant Secretary for Microeconomic Analysis
Department of the Treasury

September 24, 2014

FEMALE LFP HAS PEAKED AFTER LONG INCREASE



US IS LOSING GROUND RELATIVE TO OTHER COUNTRIES



WE KNOW A FEW THINGS ABOUT THE DECLINE

- ① Youth LFP is falling for both men/women

WE KNOW A FEW THINGS ABOUT THE DECLINE

- ① Youth LFP is falling for both men/women
 - Participation is falling among students (trend)

WE KNOW A FEW THINGS ABOUT THE DECLINE

- ① Youth LFP is falling for both men/women
 - Participation is falling among students (trend)
 - Enrollment is increasing

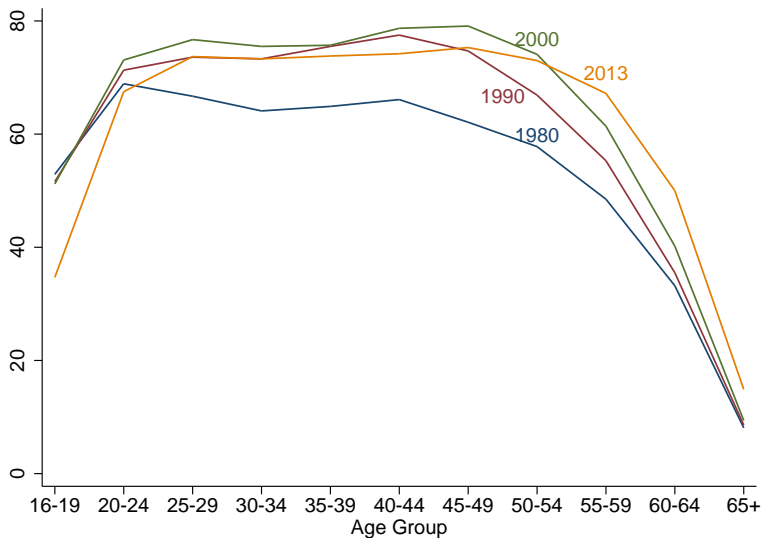
WE KNOW A FEW THINGS ABOUT THE DECLINE

- ① Youth LFP is falling for both men/women
 - Participation is falling among students (trend)
 - Enrollment is increasing
- ② Baby boomers hit early retirement age as recession began

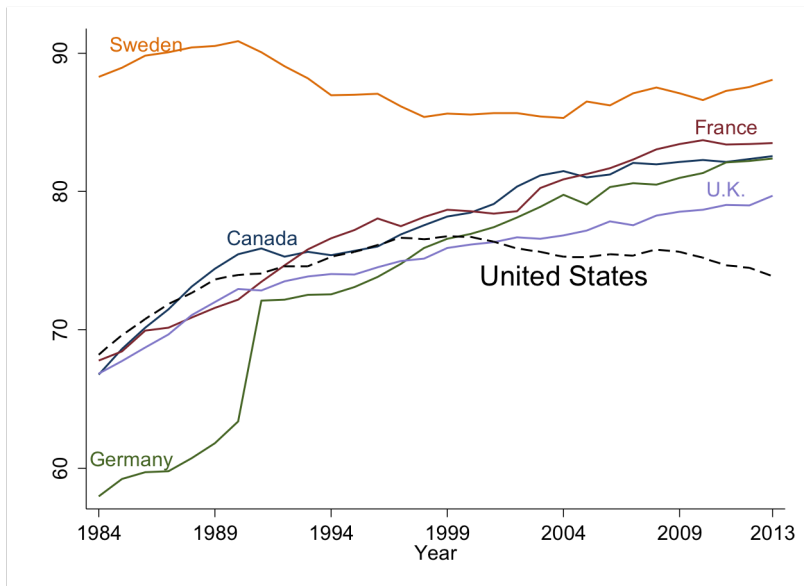
WE KNOW A FEW THINGS ABOUT THE DECLINE

- ① Youth LFP is falling for both men/women
 - Participation is falling among students (trend)
 - Enrollment is increasing
- ② Baby boomers hit early retirement age as recession began
- ③ To avoid enrollment/retirement effects, look by age

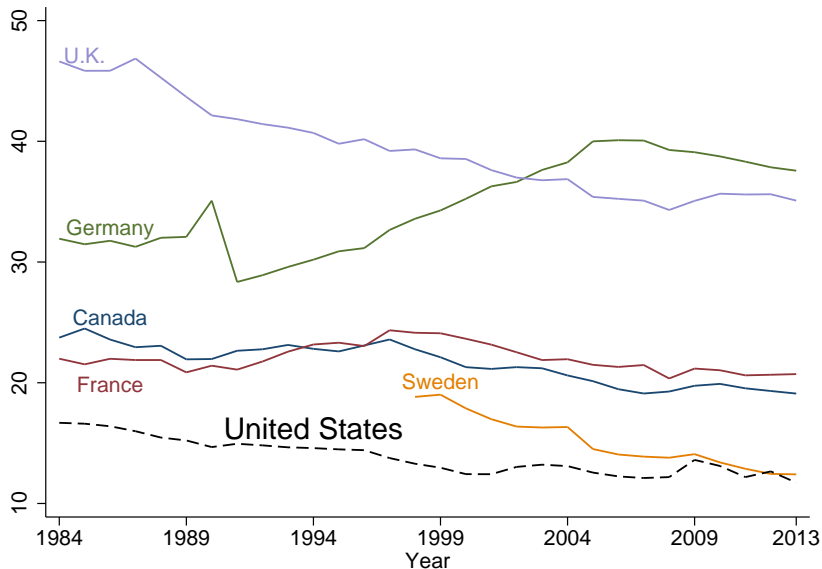
LFP IS FALLING AMONG THE PRIME-AGED 25-54



AMONG PRIME-AGED WOMEN 25-54, US LOOKS WORSE



MANY MORE NON-US WOMEN WORKERS PART-TIME



UK HAS CAUGHT UP WITH US ON LFP AGE 16+

- 1 Sudden recent convergence in 16+ is due to

UK HAS CAUGHT UP WITH US ON LFP AGE 16+

- ① Sudden recent convergence in 16+ is due to
 - Sharpened US fall since 2008

UK HAS CAUGHT UP WITH US ON LFP AGE 16+

- ① Sudden recent convergence in 16+ is due to
 - Sharpened US fall since 2008
 - Continued upward UK trend

UK HAS CAUGHT UP WITH US ON LFP AGE 16+

- 1 Sudden recent convergence in 16+ is due to
 - Sharpened US fall since 2008
 - Continued upward UK trend
- 2 Sharpened US fall is due to baby boomers retiring, recession

UK HAS CAUGHT UP WITH US ON LFP AGE 16+

- 1 Sudden recent convergence in 16+ is due to
 - Sharpened US fall since 2008
 - Continued upward UK trend
- 2 Sharpened US fall is due to baby boomers retiring, recession
 - Smaller, later baby boom in UK

UK HAS CAUGHT UP WITH US ON LFP AGE 16+

- 1 Sudden recent convergence in 16+ is due to
 - Sharpened US fall since 2008
 - Continued upward UK trend
- 2 Sharpened US fall is due to baby boomers retiring, recession
 - Smaller, later baby boom in UK
 - LFP in UK mysteriously unaffected by recession

UK HAS CAUGHT UP WITH US ON LFP AGE 16+

- 1 Sudden recent convergence in 16+ is due to
 - Sharpened US fall since 2008
 - Continued upward UK trend
- 2 Sharpened US fall is due to baby boomers retiring, recession
 - Smaller, later baby boom in UK
 - LFP in UK mysteriously unaffected by recession
- 3 But US/UK prime-age LFPs have diverged since 2000

UK HAS CAUGHT UP WITH US ON LFP AGE 16+

- 1 Sudden recent convergence in 16+ is due to
 - Sharpened US fall since 2008
 - Continued upward UK trend
- 2 Sharpened US fall is due to baby boomers retiring, recession
 - Smaller, later baby boom in UK
 - LFP in UK mysteriously unaffected by recession
- 3 But US/UK prime-age LFPs have diverged since 2000
 - US LFPs for women in 30s, 40s have been falling

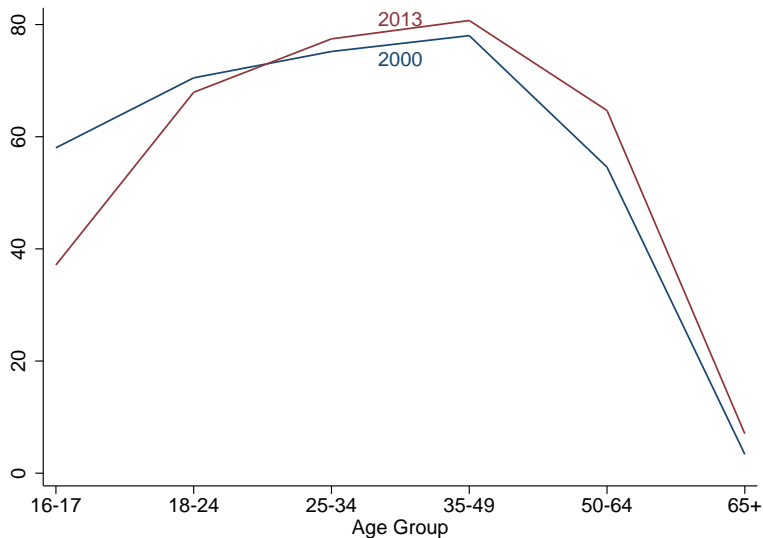
UK HAS CAUGHT UP WITH US ON LFP AGE 16+

- 1 Sudden recent convergence in 16+ is due to
 - Sharpened US fall since 2008
 - Continued upward UK trend
- 2 Sharpened US fall is due to baby boomers retiring, recession
 - Smaller, later baby boom in UK
 - LFP in UK mysteriously unaffected by recession
- 3 But US/UK prime-age LFPs have diverged since 2000
 - US LFPs for women in 30s, 40s have been falling
 - Newest US cohorts work no more than earlier cohorts

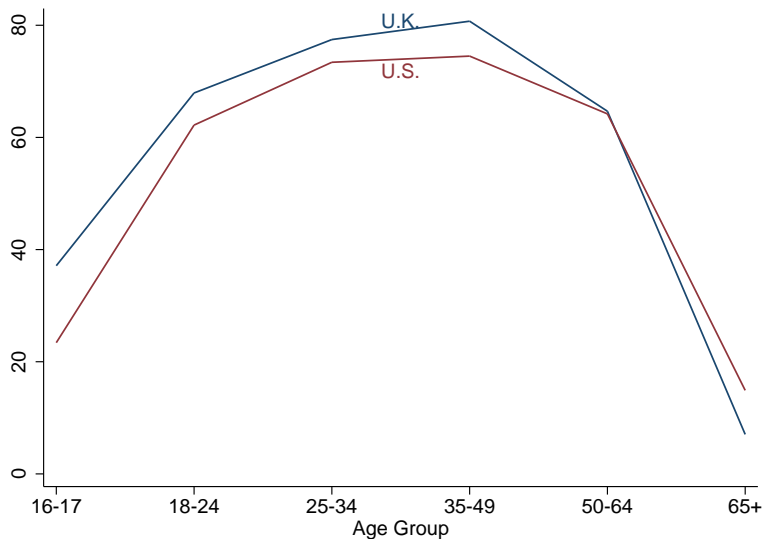
UK HAS CAUGHT UP WITH US ON LFP AGE 16+

- 1 Sudden recent convergence in 16+ is due to
 - Sharpened US fall since 2008
 - Continued upward UK trend
- 2 Sharpened US fall is due to baby boomers retiring, recession
 - Smaller, later baby boom in UK
 - LFP in UK mysteriously unaffected by recession
- 3 But US/UK prime-age LFPs have diverged since 2000
 - US LFPs for women in 30s, 40s have been falling
 - Newest US cohorts work no more than earlier cohorts
 - In UK the opposite

UK AGE-SPECIFIC FEMALE LFPS 2000, 2014



US vs UK AGE-SPECIFIC FEMALE LFPS



SO WHY IS LFP FALLING FOR US WOMEN IN 30s, 40s?

- ① Rise in 1990s was due to

SO WHY IS LFP FALLING FOR US WOMEN IN 30s, 40s?

- ① Rise in 1990s was due to
 - Unusually strong GDP growth, combined with

SO WHY IS LFP FALLING FOR US WOMEN IN 30s, 40s?

- ① Rise in 1990s was due to
 - Unusually strong GDP growth, combined with
 - Expansion of EITC

SO WHY IS LFP FALLING FOR US WOMEN IN 30s, 40s?

- ① Rise in 1990s was due to
 - Unusually strong GDP growth, combined with
 - Expansion of EITC
 - Tying of welfare to work (TANF)

SO WHY IS LFP FALLING FOR US WOMEN IN 30s, 40s?

- ① Rise in 1990s was due to
 - Unusually strong GDP growth, combined with
 - Expansion of EITC
 - Tying of welfare to work (TANF)
- ② Perhaps will not return to peak in absence of such growth?

SO WHY IS LFP FALLING FOR US WOMEN IN 30s, 40s?

- 1 Rise in 1990s was due to
 - Unusually strong GDP growth, combined with
 - Expansion of EITC
 - Tying of welfare to work (TANF)
- 2 Perhaps will not return to peak in absence of such growth?
 - But then how do other countries have a higher LFP?

WHY DO OTHER COUNTRIES HAVE HIGHER LFP 30–50?

- ① Seems other countries draw in women to work part-time with

WHY DO OTHER COUNTRIES HAVE HIGHER LFP 30–50?

- ① Seems other countries draw in women to work part-time with
 - Paid parental leave

WHY DO OTHER COUNTRIES HAVE HIGHER LFP 30–50?

- ① Seems other countries draw in women to work part-time with
 - Paid parental leave
 - Subsidized child care

WHY DO OTHER COUNTRIES HAVE HIGHER LFP 30–50?

- ① Seems other countries draw in women to work part-time with
 - Paid parental leave
 - Subsidized child care
 - Other family–friendly policies

WHY DO OTHER COUNTRIES HAVE HIGHER LFP 30–50?

- ① Seems other countries draw in women to work part-time with
 - Paid parental leave
 - Subsidized child care
 - Other family–friendly policies
 - Taxation at individual, not family, level

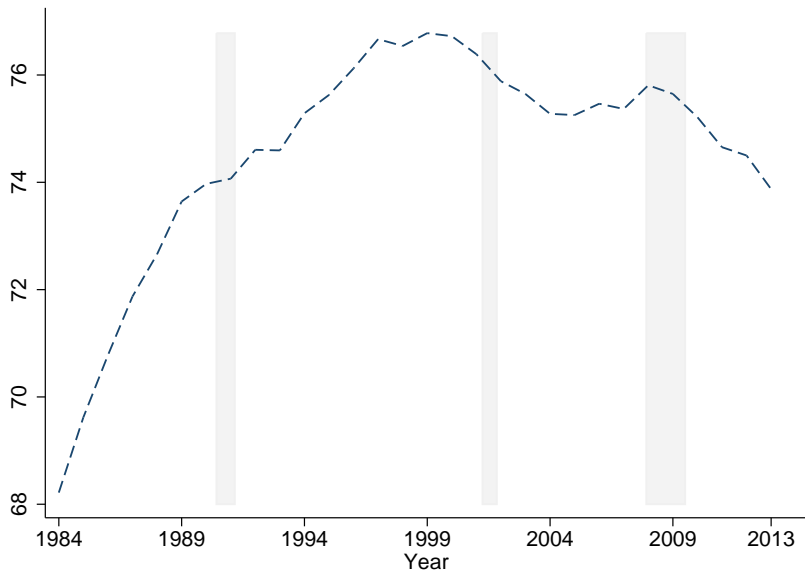
WHY DO OTHER COUNTRIES HAVE HIGHER LFP 30–50?

- 1 Seems other countries draw in women to work part-time with
 - Paid parental leave
 - Subsidized child care
 - Other family–friendly policies
 - Taxation at individual, not family, level
- 2 So probably some slack in US female LFP, but not much

WHY DO OTHER COUNTRIES HAVE HIGHER LFP 30–50?

- 1 Seems other countries draw in women to work part-time with
 - Paid parental leave
 - Subsidized child care
 - Other family–friendly policies
 - Taxation at individual, not family, level
- 2 So probably some slack in US female LFP, but not much
 - Confirm by eyeballing prime–age LFP trend

US FEMALE PRIME-AGE LFP 25-54



FAMILY-FRIENDLY WORKPLACES

- 1 Remove obstacles so those who want to work can

FAMILY-FRIENDLY WORKPLACES

- 1 Remove obstacles so those who want to work can
- 2 Allow work to be combined with family

FAMILY-FRIENDLY WORKPLACES

- 1 Remove obstacles so those who want to work can
- 2 Allow work to be combined with family
- 3 Design policies to include men as well as women

FAMILY-FRIENDLY WORKPLACES

- 1 Remove obstacles so those who want to work can
- 2 Allow work to be combined with family
- 3 Design policies to include men as well as women
- 4 Examples

FAMILY-FRIENDLY WORKPLACES

- 1 Remove obstacles so those who want to work can
- 2 Allow work to be combined with family
- 3 Design policies to include men as well as women
- 4 Examples
 - Paid parental leave

FAMILY-FRIENDLY WORKPLACES

- 1 Remove obstacles so those who want to work can
- 2 Allow work to be combined with family
- 3 Design policies to include men as well as women
- 4 Examples
 - Paid parental leave
 - Paid sickness-related leave

FAMILY-FRIENDLY WORKPLACES

- ① Remove obstacles so those who want to work can
- ② Allow work to be combined with family
- ③ Design policies to include men as well as women

- ④ Examples
 - Paid parental leave
 - Paid sickness-related leave
 - Flexible schedules

FAMILY-FRIENDLY WORKPLACES

- ① Remove obstacles so those who want to work can
- ② Allow work to be combined with family
- ③ Design policies to include men as well as women

- ④ Examples
 - Paid parental leave
 - Paid sickness-related leave
 - Flexible schedules
 - Quality pre-school education

FAMILY-FRIENDLY WORKPLACES

- 1 Remove obstacles so those who want to work can
- 2 Allow work to be combined with family
- 3 Design policies to include men as well as women
- 4 Examples
 - Paid parental leave
 - Paid sickness-related leave
 - Flexible schedules
 - Quality pre-school education
 - Childcare

SOURCES

- 1 Sources for figure data

SOURCES

- ① Sources for figure data
 - Figure 1: BLS and St. Louis Fed.

SOURCES

- ① Sources for figure data
 - Figure 1: BLS and St. Louis Fed.
 - Figure 2: Conference Board.

SOURCES

- ① Sources for figure data
 - Figure 1: BLS and St. Louis Fed.
 - Figure 2: Conference Board.
 - Figure 3: BLS.

SOURCES

- ① Sources for figure data
 - Figure 1: BLS and St. Louis Fed.
 - Figure 2: Conference Board.
 - Figure 3: BLS.
 - Figure 4: ILO.

SOURCES

- ① Sources for figure data
 - Figure 1: BLS and St. Louis Fed.
 - Figure 2: Conference Board.
 - Figure 3: BLS.
 - Figure 4: ILO.
 - Figure 5: OECD.

SOURCES

① Sources for figure data

- Figure 1: BLS and St. Louis Fed.
- Figure 2: Conference Board.
- Figure 3: BLS.
- Figure 4: ILO.
- Figure 5: OECD.
- Figure 6: US– BLS. UK – Office for National Statistics.

SOURCES

1 Sources for figure data

- Figure 1: BLS and St. Louis Fed.
- Figure 2: Conference Board.
- Figure 3: BLS.
- Figure 4: ILO.
- Figure 5: OECD.
- Figure 6: US– BLS. UK – Office for National Statistics.
- Figure 7: BLS.

REFERENCES

- 1 Benito, A. and P. Bunn. "Understanding Labour Force Participation in the United Kingdom". *Bank of England Quarterly Review*, Q1 2011.

REFERENCES

- 1 Benito, A. and P. Bunn. "Understanding Labour Force Participation in the United Kingdom". *Bank of England Quarterly Review*, Q1 2011.
- 2 Blau, F. and L. Kahn. "Female Labor Supply: Why is the US Falling Behind?". NBER Working Paper 18702, January 2013.

REFERENCES

- 1 Benito, A. and P. Bunn. "Understanding Labour Force Participation in the United Kingdom". *Bank of England Quarterly Review*, Q1 2011.
- 2 Blau, F. and L. Kahn. "Female Labor Supply: Why is the US Falling Behind?". NBER Working Paper 18702, January 2013.
- 3 Council of Economic Advisers. "Jobs, Workers and Skills". Chapter 4 of *Economic Report of the President 2013*.

REFERENCES

- 1 Benito, A. and P. Bunn. "Understanding Labour Force Participation in the United Kingdom". *Bank of England Quarterly Review*, Q1 2011.
- 2 Blau, F. and L. Kahn. "Female Labor Supply: Why is the US Falling Behind?". NBER Working Paper 18702, January 2013.
- 3 Council of Economic Advisers. "Jobs, Workers and Skills". Chapter 4 of *Economic Report of the President 2013*.
- 4 Greenwood, J., A. Seshadri and G. Vandenbroucke. "The Baby Boom and Baby Bust". *American Economic Review*, March 2005.

REFERENCES

- 1 Benito, A. and P. Bunn. "Understanding Labour Force Participation in the United Kingdom". *Bank of England Quarterly Review*, Q1 2011.
- 2 Blau, F. and L. Kahn. "Female Labor Supply: Why is the US Falling Behind?". NBER Working Paper 18702, January 2013.
- 3 Council of Economic Advisers. "Jobs, Workers and Skills". Chapter 4 of *Economic Report of the President 2013*.
- 4 Greenwood, J., A. Seshadri and G. Vandenbroucke. "The Baby Boom and Baby Bust". *American Economic Review*, March 2005.
- 5 Juhn, C. and S. Potter. "Changes in Labor Force Participation in the United States". *Journal of Economic Perspectives*, Summer 2006.

REFERENCES

- 1 Benito, A. and P. Bunn. "Understanding Labour Force Participation in the United Kingdom". *Bank of England Quarterly Review*, Q1 2011.
- 2 Blau, F. and L. Kahn. "Female Labor Supply: Why is the US Falling Behind?". NBER Working Paper 18702, January 2013.
- 3 Council of Economic Advisers. "Jobs, Workers and Skills". Chapter 4 of *Economic Report of the President 2013*.
- 4 Greenwood, J., A. Seshadri and G. Vandenbroucke. "The Baby Boom and Baby Bust". *American Economic Review*, March 2005.
- 5 Juhn, C. and S. Potter. "Changes in Labor Force Participation in the United States". *Journal of Economic Perspectives*, Summer 2006.
- 6 Office for National Statistics. "Population Trends". Winter 2008.

REFERENCES

- 1 Benito, A. and P. Bunn. "Understanding Labour Force Participation in the United Kingdom". *Bank of England Quarterly Review*, Q1 2011.
- 2 Blau, F. and L. Kahn. "Female Labor Supply: Why is the US Falling Behind?". NBER Working Paper 18702, January 2013.
- 3 Council of Economic Advisers. "Jobs, Workers and Skills". Chapter 4 of *Economic Report of the President 2013*.
- 4 Greenwood, J., A. Seshadri and G. Vandenbroucke. "The Baby Boom and Baby Bust". *American Economic Review*, March 2005.
- 5 Juhn, C. and S. Potter. "Changes in Labor Force Participation in the United States". *Journal of Economic Perspectives*, Summer 2006.
- 6 Office for National Statistics. "Population Trends". Winter 2008.
- 7 Wells Fargo. "Labor Force Participation: A Cross-Country Analysis". June 2014.
www08.wellsfargomedia.com/downloads/pdf/com/insights/economics/special-reports/Labor_Force_Participation_A_Cross-Country_Analysis_06132014.pdf